

Mauna Lani Resort Golf Course Clubhouse

Client: Mauna Lani Resort Operations, Inc.

Location: North Kohala Coast, HI



Architect-of-Record: Oda/McCarty Architects, Ltd.

FLEMING
& Associates, LLC
ARCHITECTURE & PLANNING

Iron Horse School Joint-Use Gymnasium

Client: San Ramon Unified School District
Location: San Ramon, CA
Cost: \$4,250,000
Size: 24,500 s.f.
Year: 2001



The Iron Horse Middle School Community Gymnasium is a joint-use facility funded by the San Ramon Valley Unified School District and the City of San Ramon Parks and Recreation Department. Special design and access needs were incorporated into the design to allow separate staffing departments to fully utilize the facility at separate times and to fulfill different athletic and social programs.

This facility includes four indoor regulation sized high school main basketball courts, five standard sized volleyball courts and seven exterior playcourts. In addition, there are separate men's and women's locker rooms facilities to serve the student population, men's and women's restroom facilities, offices for physical education and Parks and Recreation staff and ample storage.

Architect-of-Record: Gordon H. Chong & Partners, Inc.; individual project experience of Scott Fleming

FLEMING
& Associates, LLC
ARCHITECTURE & PLANNING

Mahaney Park Recreation Center

Client: City of Roseville, Dept. of Parks & Recreation

Location: Roseville, CA

Cost: \$3,750,000

Size: 11,000 s.f.

Year: 1998



Architect-of-Record: Gordon H. Chong & Partners, Inc.; individual project experience of Scott Fleming

This Community Recreation Center includes two indoor regulation sized high school main basketball courts and three standard sized volleyball courts. In addition, there are separate men's and women's locker and showers, men's and women's restrooms, childcare, dance, cafe, weight room and catering kitchen facilities.

FLEMING
& Associates, LLC
ARCHITECTURE & PLANNING

Woodside Elementary School Gymnasium

Client: Woodside Elementary School District
Location: Woodside, CA
Cost: \$2,450,000
Size: 10,300 s.f.
Year: 2002



This 10,300 square foot gymnasium was added to the campus as part of the Woodside Elementary School Master Plan. This facility includes three indoor regulation sized high school main basketball courts and three standard sized volleyball courts. In addition, there are separate men’s and women’s restroom facilities, offices for physical education staff, a maintenance workshop and garage and ample storage for sporting and academic materials.

The new gymnasium is sited adjacent to newly rehabilitated soccer and baseball playfields enjoyed by both the campus population and local community.

Architect-of-Record: Gordon H. Chong & Partners, Inc.; individual project experience of Scott Fleming

FLEMING
& Associates, LLC
ARCHITECTURE & PLANNING

Pahoa High School Gymnasium

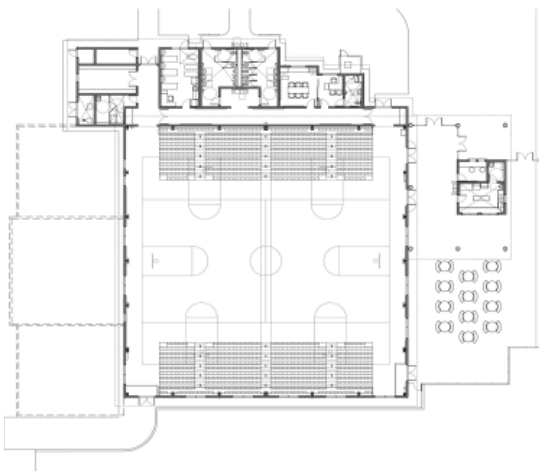
Client: State of Hawaii, Dept. of Education
Location: Pahoa, HI
Cost: \$8,500,000
Size: 21,000 s.f.
Year: Construction completed Fall, 2009



This new 21,000 square foot Gymnasium at Pahoa High School represents a defining moment as it is the first Capital Improvement project at the school in almost a decade . This building replaces the original gymnasium building which was shared with another school campus and is badly deteriorated.

The building contains three regulation basketball courts, ticket office, snack bar, administrative offices, training room and ample storage. In the future, an addition may be built which will add Boy's and Girl's toilet room, locker and shower facilities as well as a wrestling room.

The new Gymnasium occupies one of the last open areas on the campus that is not dedicated to outdoor play activity fields and was designed to meet the equivalent requirements for a LEED Silver Rating.



Architect-of-Record: Durrant-Media Five; individual project experience of Scott Fleming

FLEMING
& Associates, LLC
ARCHITECTURE & PLANNING

Pine Valley School Joint-Use Gymnasium

Client: San Ramon Unified School District
Location: San Ramon, CA
Cost: \$2,800,000
Size: 12,000 s.f.
Year: 2001



The Pine Valley Middle School Community Gymnasium is a joint-use facility funded by the San Ramon Valley Unified School District and the City of San Ramon Parks and Recreation Department. Special design and access needs were incorporated into the design to allow separate staffing departments to fully utilize the facility at separate times and to fulfill different athletic and social programs.

This facility includes three indoor regulation sized high school main basketball courts and three standard sized volleyball courts. In addition, there are separate men's and women's restroom facilities, offices for physical education and Parks and Recreation staff and ample storage facilities.

Architect-of-Record: Gordon H. Cheng & Partners, Inc.; individual project experience of Scott Fleming

FLEMING
& Associates, LLC
ARCHITECTURE & PLANNING

Randolph Golf Course Clubhouse

Client: City of Tucson, Dept. of Parks & Recreation
Location: Tucson, AZ
Cost: \$1,500,000
Size: 10,000 s.f.
Year: 1991

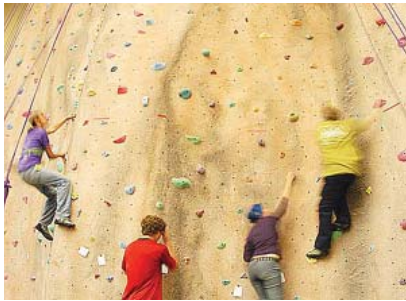


Architect-of-Record: Sakellar Associates, Inc.; individual project experience of Scott Fleming

FLEMING
& Associates, LLC
ARCHITECTURE & PLANNING

H.S.U Student Recreation Center

Client: California State University
Location: Arcata, CA
Cost: \$3,066,000
Size: 37,000 s.f.
Year: 2004



The Humboldt State University Student Recreation Center is a student funded project to create a 37,000 square foot Recreation Facility for the campus. The project includes extensive renovations to an existing 27,000 sf Field House and a new 10,000 sf Fitness Center addition.

The design complements the physical vocabulary of the existing Field House via forms and material selections and creates a new entry for the combined facility. The most prominent feature of the Fitness Center will be a 40' climbing wall.



The Field House will be completely modernized and receive new HVAC systems, synthetic athletic surfaces, divider curtains and accessibility upgrades to allow large scale public activities such as concerts and graduation events.



Architect-of-Record: Paul Roberts + Partners, Inc.; individual project experience of Scott Fleming

FLEMING
& Associates, LLC
ARCHITECTURE & PLANNING